

# DESIGN REPORT

STUDIO  
**HEDG**  
ARCHITECTS

Project name:

ROCKWOOD

# CONTENTS

## **1.0 Design Proposal Option 3A**

1.1 Option 3a Ground floor plan	2
1.2 Option 3a First floor plan	3
1.3 Option 3a Elevations	4

## **2.0 Design Proposal Option 3B**

2.1 Option 3b Ground floor plan	5
2.2 Option 3b First floor plan	6
2.3 Option 3b Elevations	7

## **3.0 Design Proposal Option 3C**

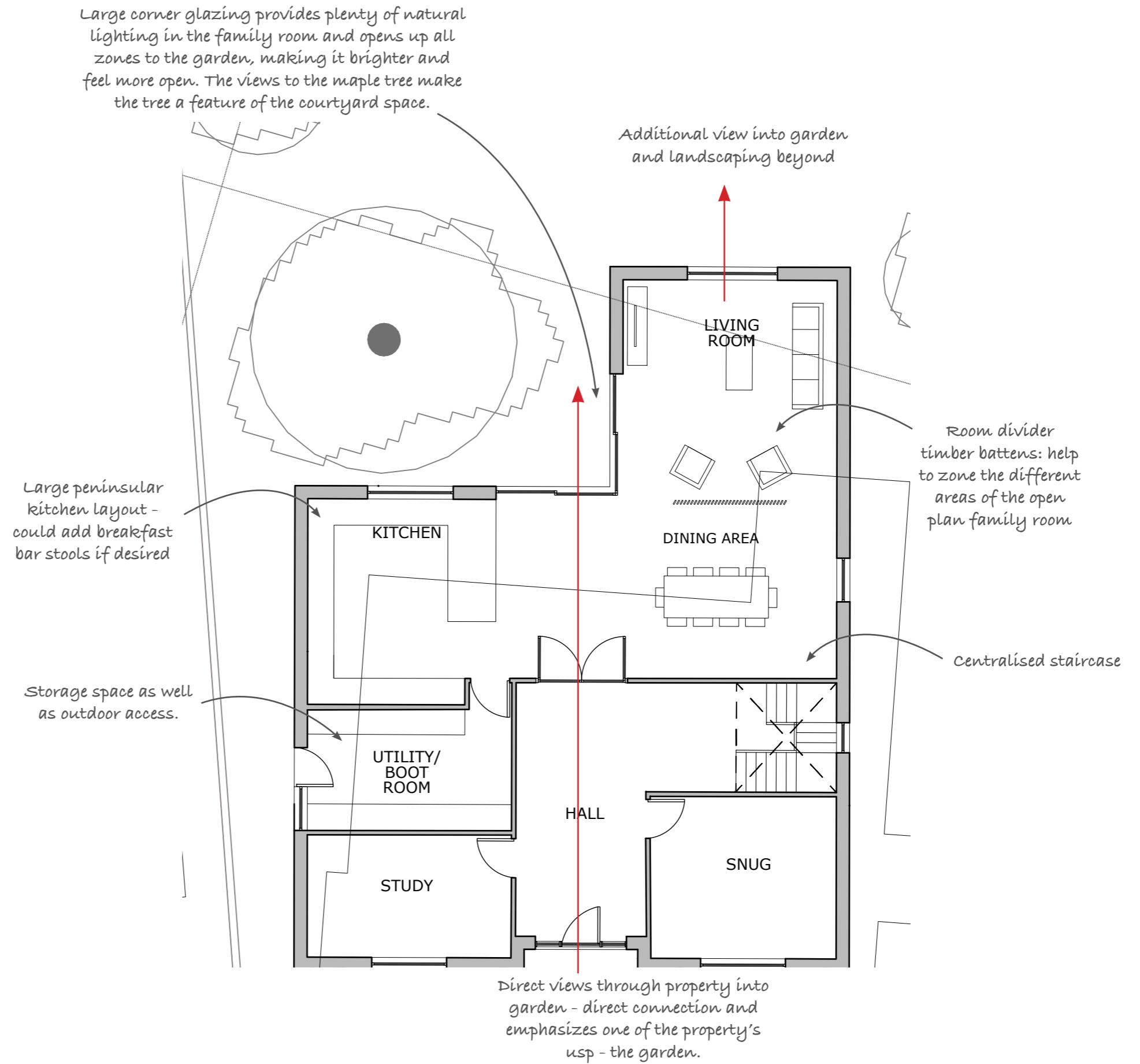
3.1 Option 3c Ground floor plan	8
3.2 Option 3c First floor plan	9
3.3 Option 3c Elevations	10

## **4.0 Design Proposal Option 3D**

4.1 Option 3d Ground floor plan	11
4.2 Option 3d First floor plan	12
4.3 Option 3d Elevations	13

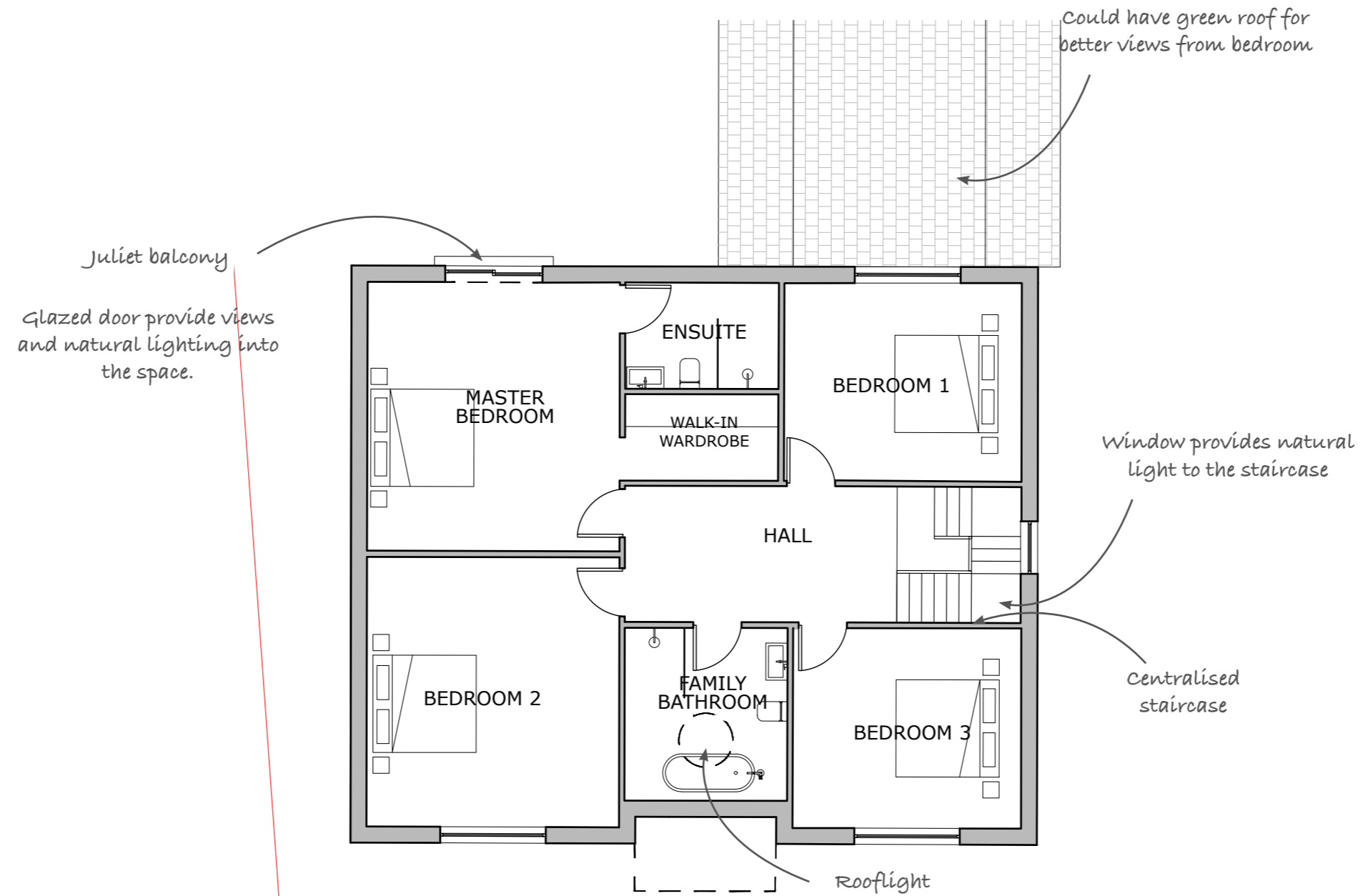
# 1.0 DESIGN PROPOSAL OPTION 3A

## 1.1 OPTION 3A GROUND FLOOR PLAN



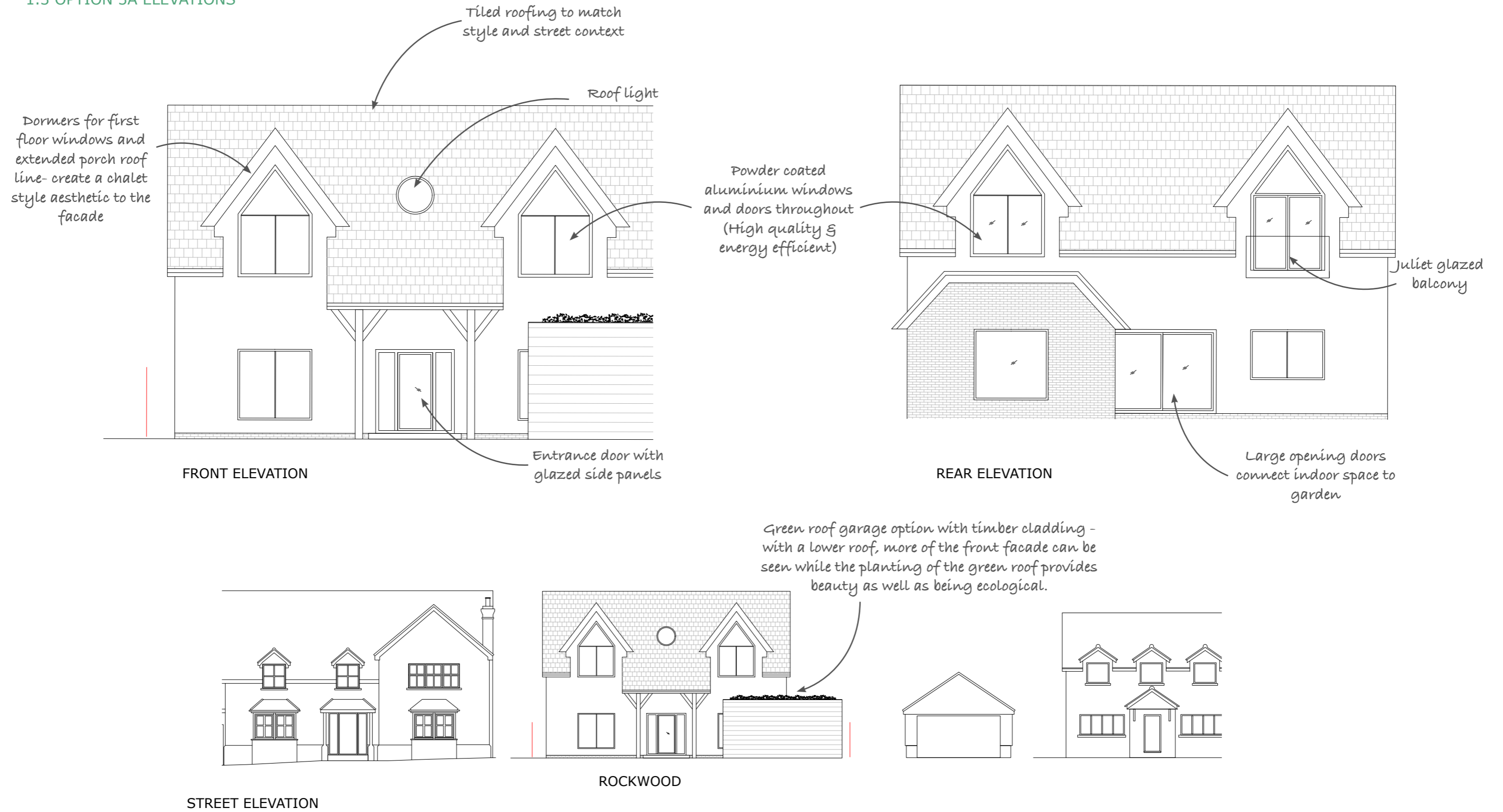
# 1.0 DESIGN PROPOSAL OPTION 3A

## 1.2 OPTION 3A FIRST FLOOR PLAN



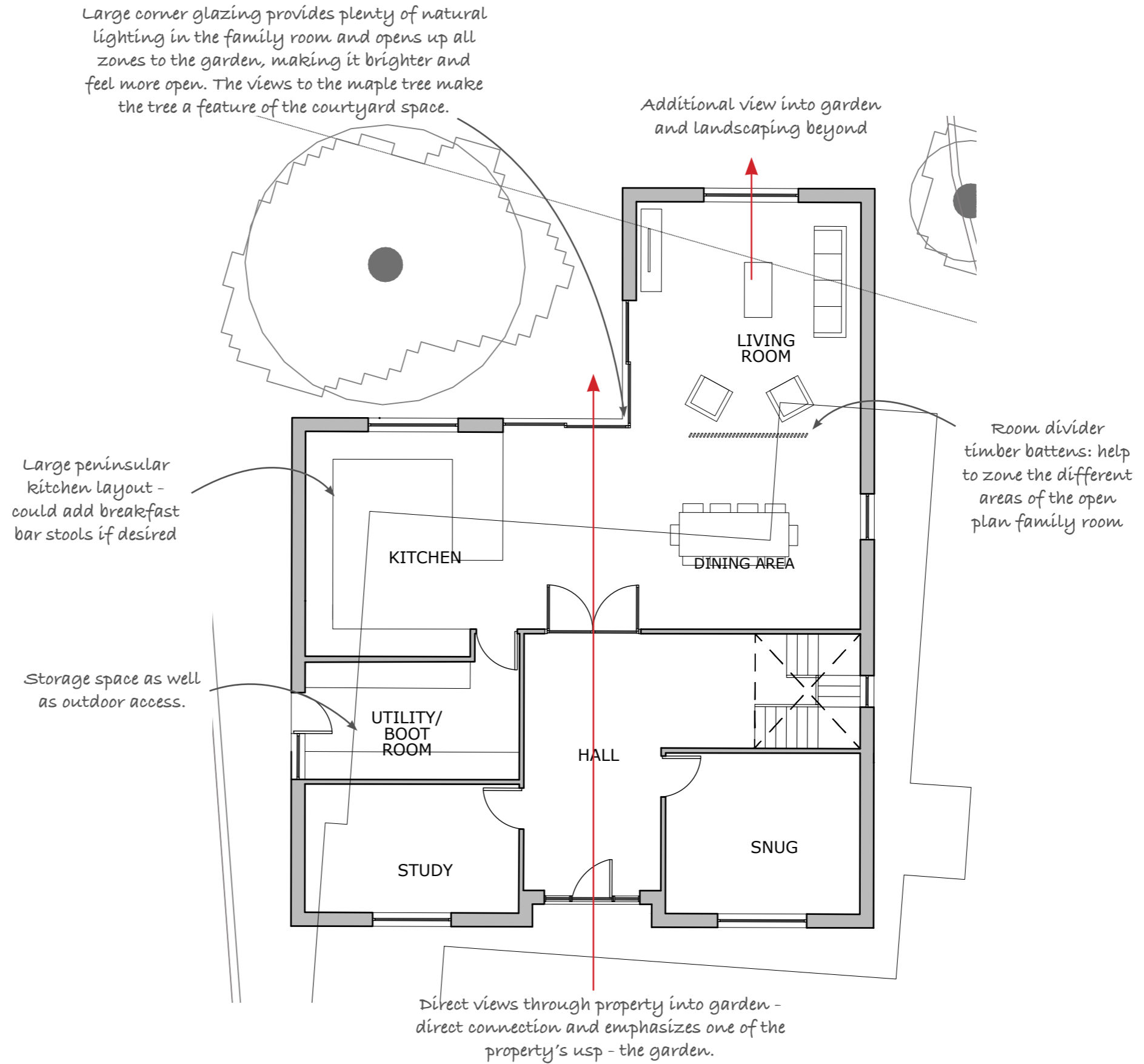
# 1.0 DESIGN PROPOSAL OPTION 3A

## 1.3 OPTION 3A ELEVATIONS



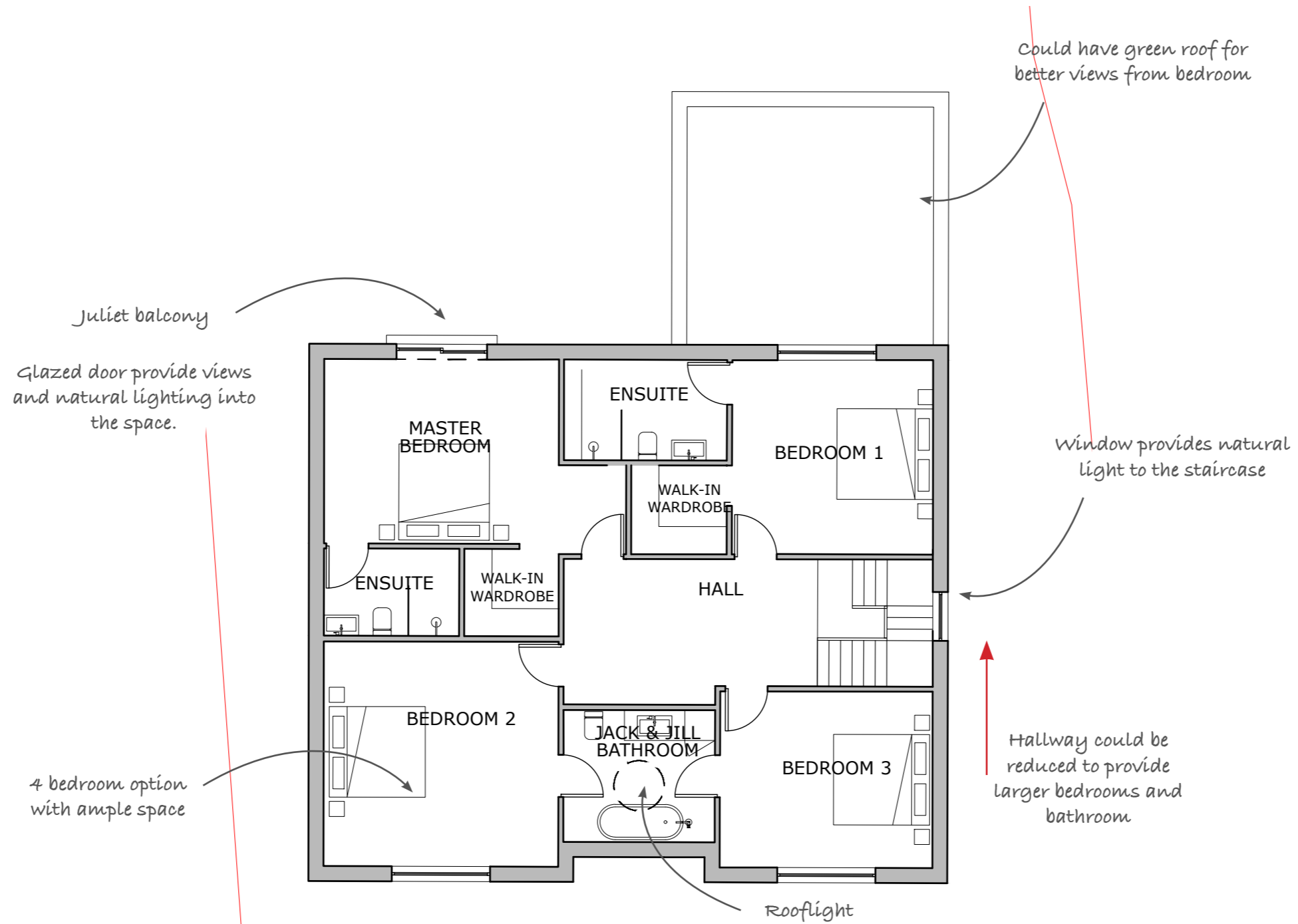
## 2.0 DESIGN PROPOSAL OPTION 3B

### 2.1 OPTION 3B GROUND FLOOR PLAN



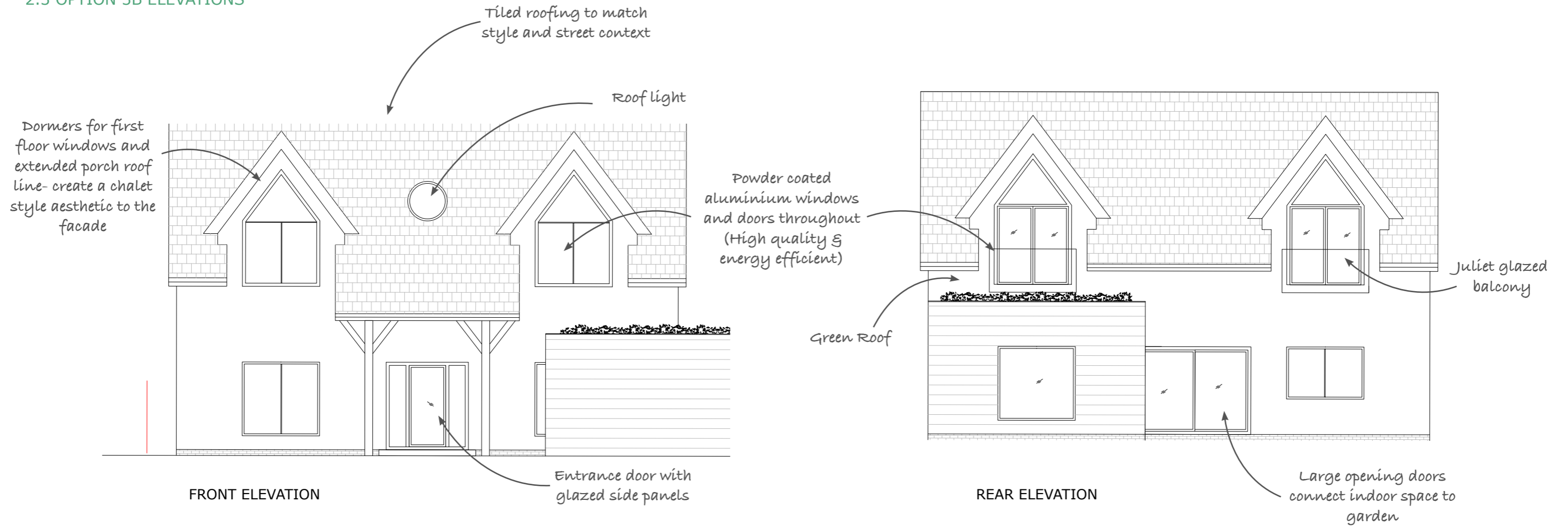
## 2.0 DESIGN PROPOSAL OPTION 3B

### 2.2 OPTION 3B FIRST FLOOR PLAN



## 2.0 DESIGN PROPOSAL OPTION 3B

### 2.3 OPTION 3B ELEVATIONS

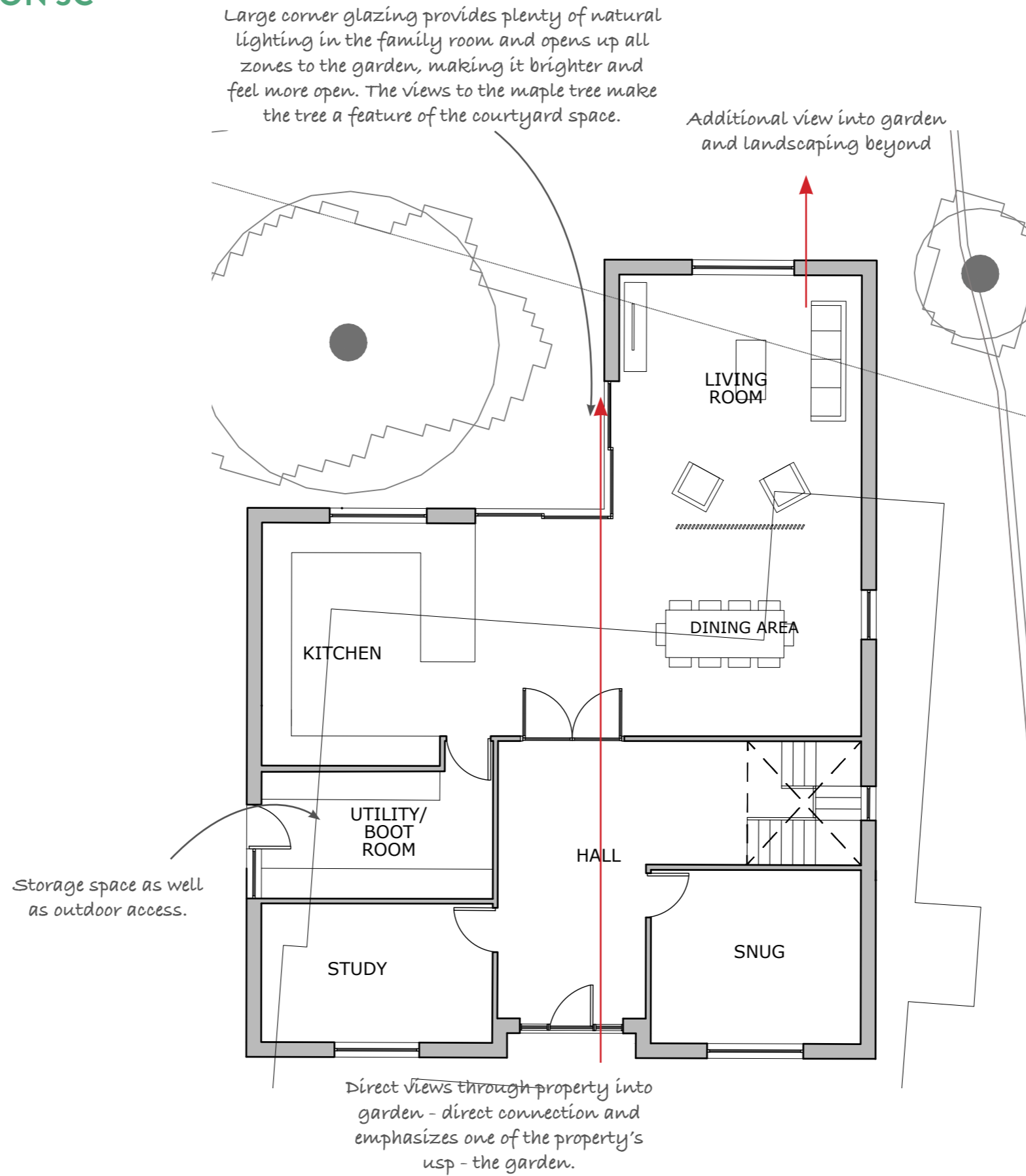


*Green roof garage option with timber cladding - with a lower roof, more of the front facade can be seen while the planting of the green roof provides beauty as well as being ecological.*



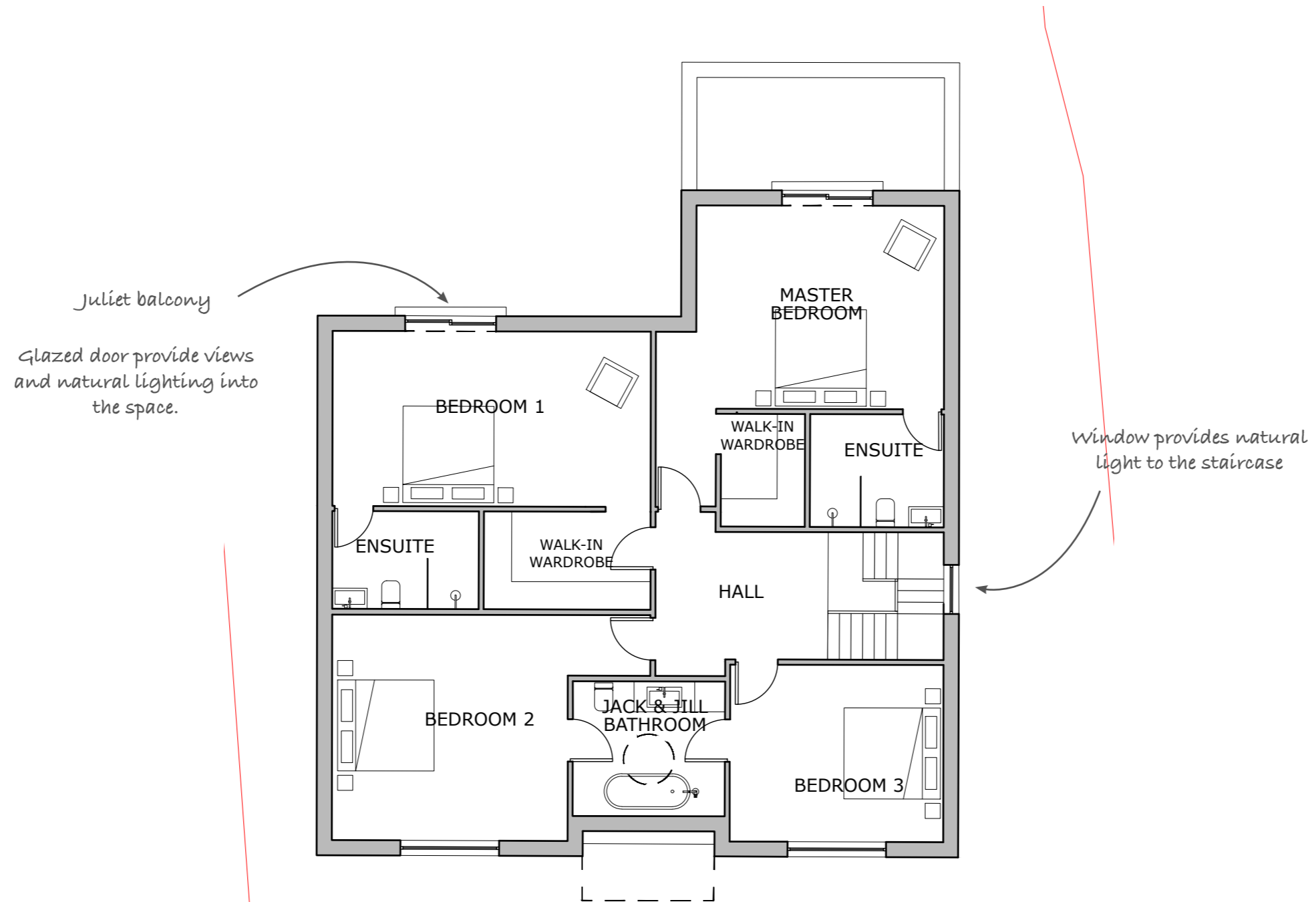
### 3.0 DESIGN PROPOSAL OPTION 3C

#### 3.1 OPTION 3B GROUND FLOOR PLAN



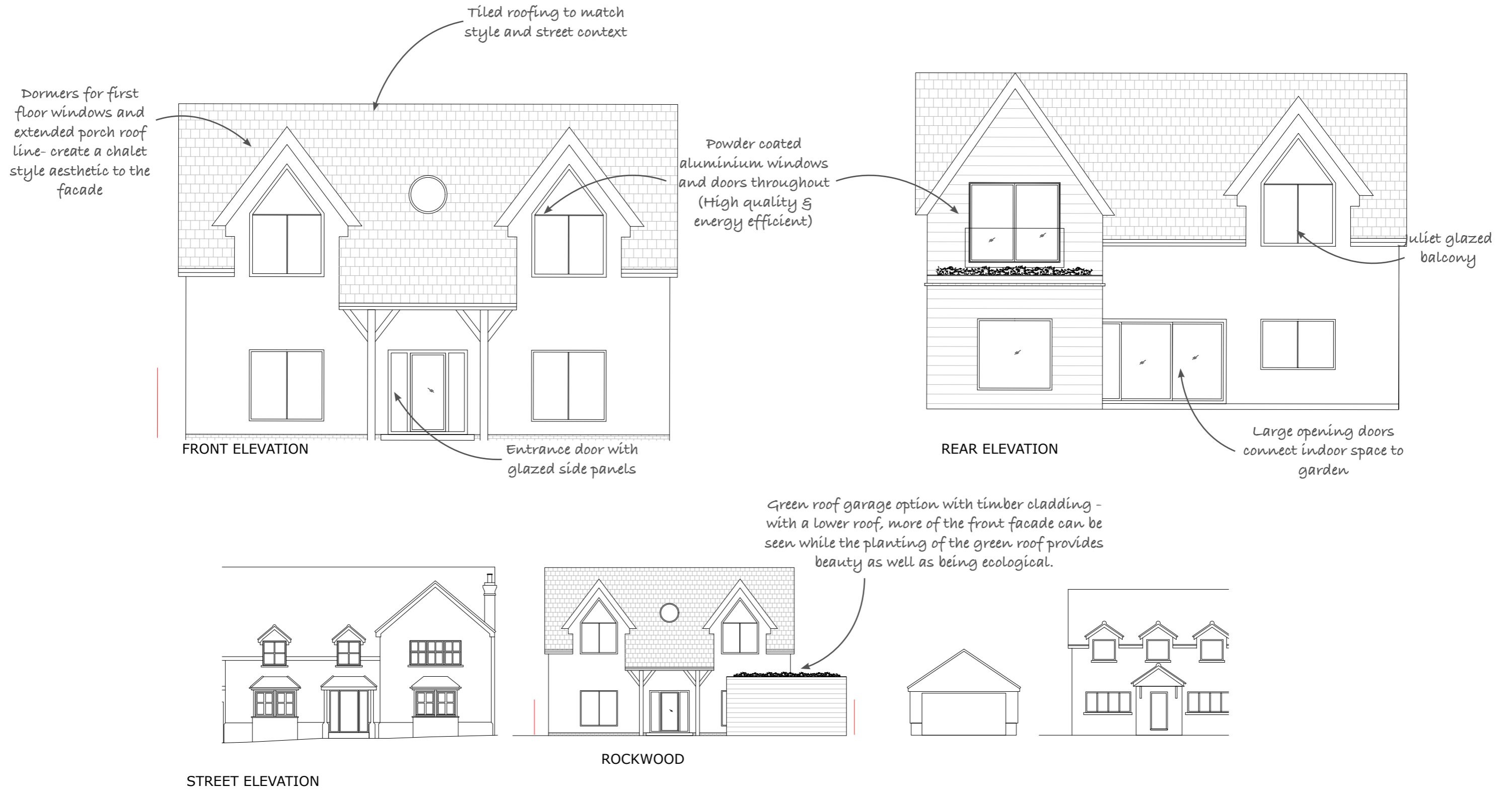
### 3.0 DESIGN PROPOSAL OPTION 3C

#### 3.2 OPTION 3C FIRST FLOOR PLAN



# 3.0 DESIGN PROPOSAL OPTION 3C

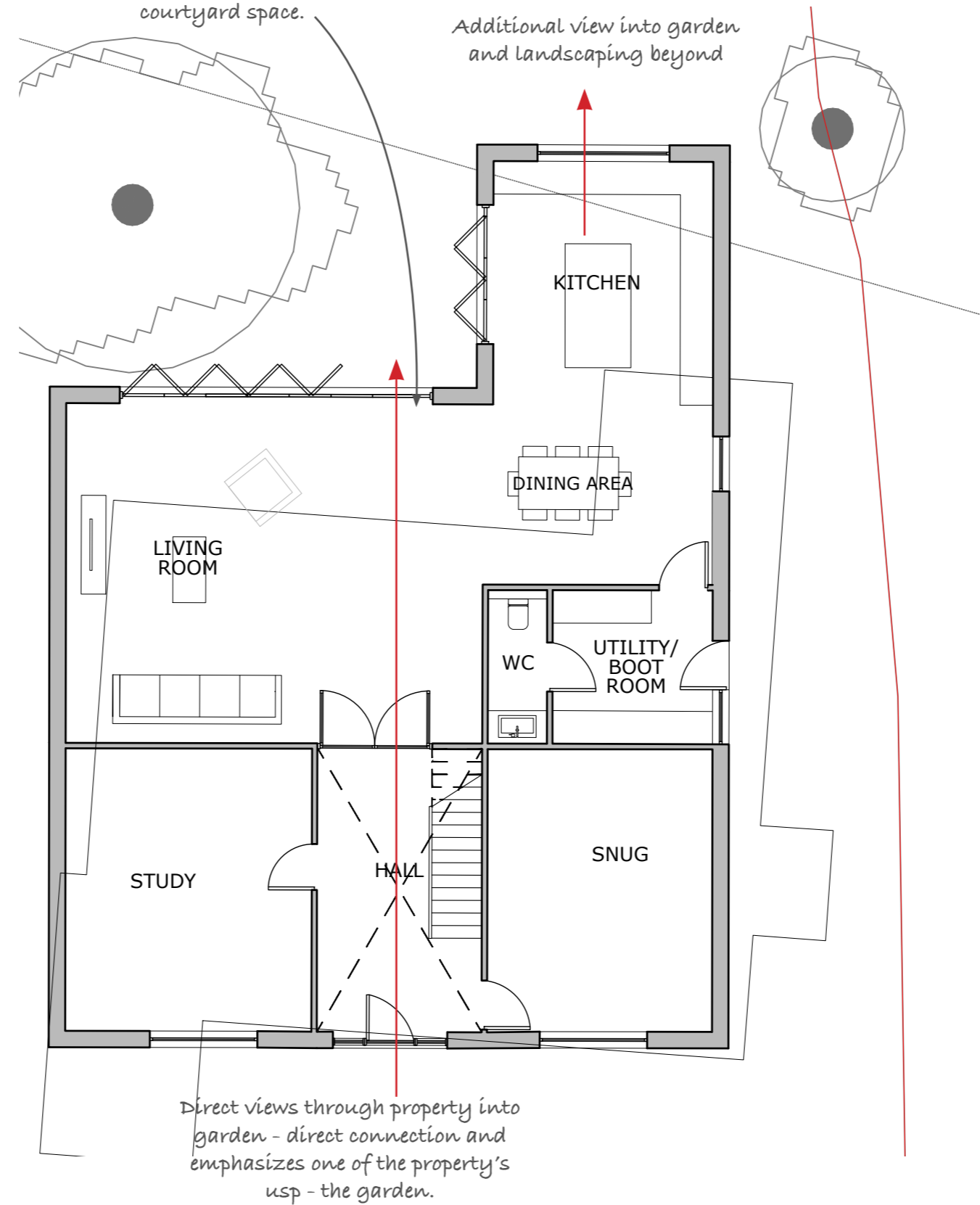
## 3.3 OPTION 3C ELEVATIONS



## 4.0 DESIGN PROPOSAL OPTION 3D

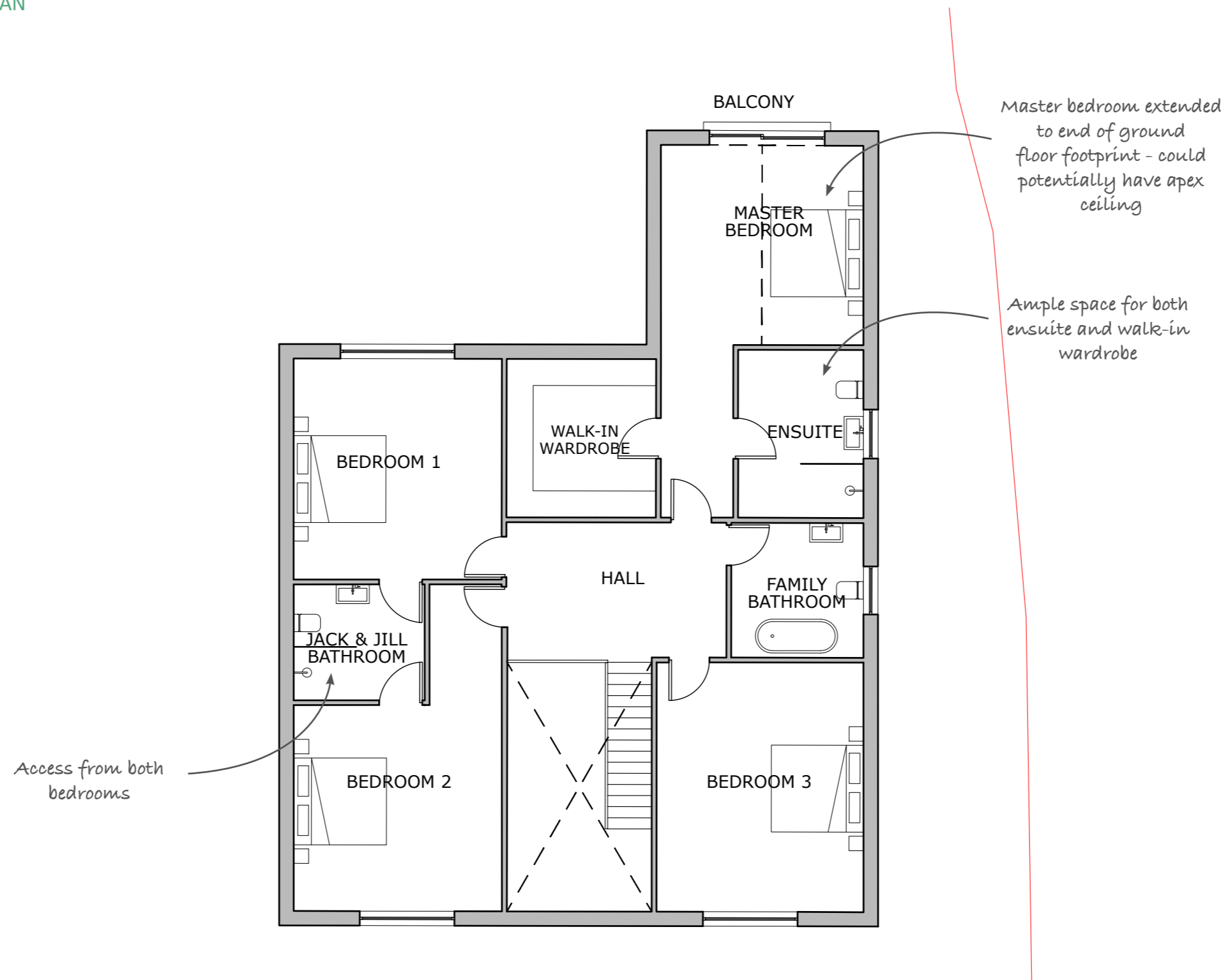
### 4.1 OPTION 3D GROUND FLOOR PLAN

Large corner glazing provides plenty of natural lighting in the family room and opens up all zones to the garden, making it brighter and feel more open. The views to the maple tree make the tree a feature of the courtyard space.



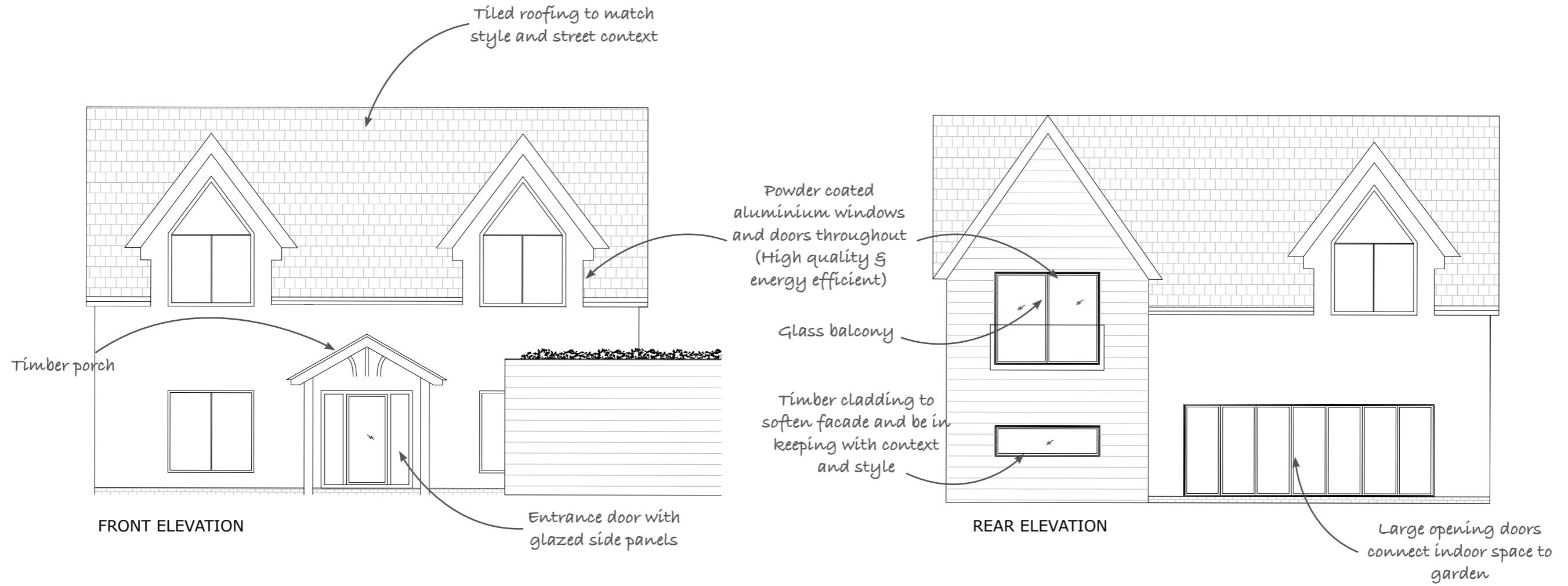
## 4.0 DESIGN PROPOSAL OPTION 3D

### 4.2 OPTION 3D FIRST FLOOR PLAN



# 4.0 DESIGN PROPOSAL OPTION 3D

## 4.3 OPTION 3D ELEVATIONS



Green roof garage option with timber cladding - with a lower roof, more of the front facade can be seen while the planting of the green roof provides beauty as well as being ecological.

